



[imergroup.com](http://imergroup.com)

# SERIES IM 180

IM 11180 | IM 13180

# SERIES IM 180

## Standard equipment

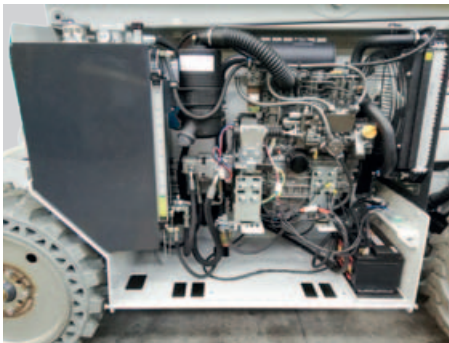
- Front driving and steering wheels
- Hydraulic transmission 2WD
- Negative parking brakes
- Mechanical wheel drive disengagement for emergency hauling
- Manual emergency lowering device
- Proportional controls
- Diagnostic system
- Hour meter
- Cylinder's holding valves
- Manual deck extension 1.5 m
- Inclinometer with motion cut out and alarms
- Overload sensor
- Audible motion alarm
- Electric scissor protection
- Rough terrain tyres extra grip 720x245 mm
- Removable control box
- Fold down railings
- Flashing beacon
- 220 V cable with plug socket and safety cut-out



Manual deck extension of 1.5 m for a total length of 4.2 m

## Diesel equipment

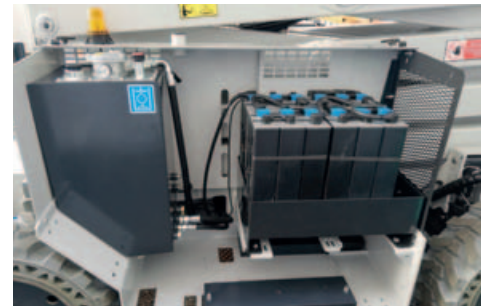
- Water cooled Diesel engine
- Start-up battery 12V 66Ah
- Start-up battery alternator
- Rough terrain tyres extra grip 720x245 mm



Yanmar 3 cylinder 18 kW diesel engine

## Electric equipment

- Power pack 48 V – 8 kW
- Traction Battery 48V 400Ah
- Battery charger with automatic switch off
- Battery control system with low voltage cut-out protection
- Battery cut-out handle
- Alternator for traction battery
- Rough terrain tyres extra grip non-marking 720x245 mm



Second battery pack and oil storage

## Diesel - Electric equipment

- Water cooled Diesel engine
- Start-up battery 12V 66Ah
- Start-up battery alternator
- Power pack 48 V – 8 kW
- Traction Battery 48V 300Ah
- Battery charger with automatic switch off
- Battery control system with low voltage cut-out protection
- Battery cut-out handle
- Alternator for traction battery
- Rough terrain tyres extra grip non-marking 720x245 mm



Control box and main battery pack

## CUSTOMIZATION OPTIONS (available on order)

- Hydraulic transmission 4WD
- Oscillating front axle
- Automatic hydraulic levelling outriggers

## Optionals

- Non marking tyres (IM 11180 D - IM 13180 D)
- Black tyres (IM 11180 E/DE - IM 13180 E/DE)
- Battery kit 400 Ah (IM 11180 DE - IM 13180 DE)
- Battery kit 525 Ah (IM 11180 E - IM 13180 E)



Second external battery pack for DE version





### BENEFITS

- ✓ Extremely versatile model, suitable for **outdoor and indoor use**, customizable with **diesel, electric or diesel-electric engines** in order to handle any work need in any type of environment
- ✓ High capacity platform of **4.2 m total length (with deck extended)**
- ✓ **Optional automatic levelling outriggers** only needed for levelling the machine on uneven ground
- ✓ **Optional oscillating front axle and four-wheel drive**, for superior traction in rough terrain
- ✓ **Capacity to work at maximum height**, within the tilt angles allowed, **without using the levelling outriggers**
- ✓ **Drivable at maximum height with no capacity restrictions**
- ✓ **4 persons** authorized for indoor and outdoor use (stabilized)
- ✓ **Maximum capacity** (with maximum authorized number of persons) **also on the extension** of the platform
- ✓ **Double load limit** for increased capacity of 100 kg with stabilized machine (600 kg for IM 11180 and 500 kg for IM 13180)



Automatic hydraulic stabilization system



Sliding opening for filling fuel without the need to open the side hood



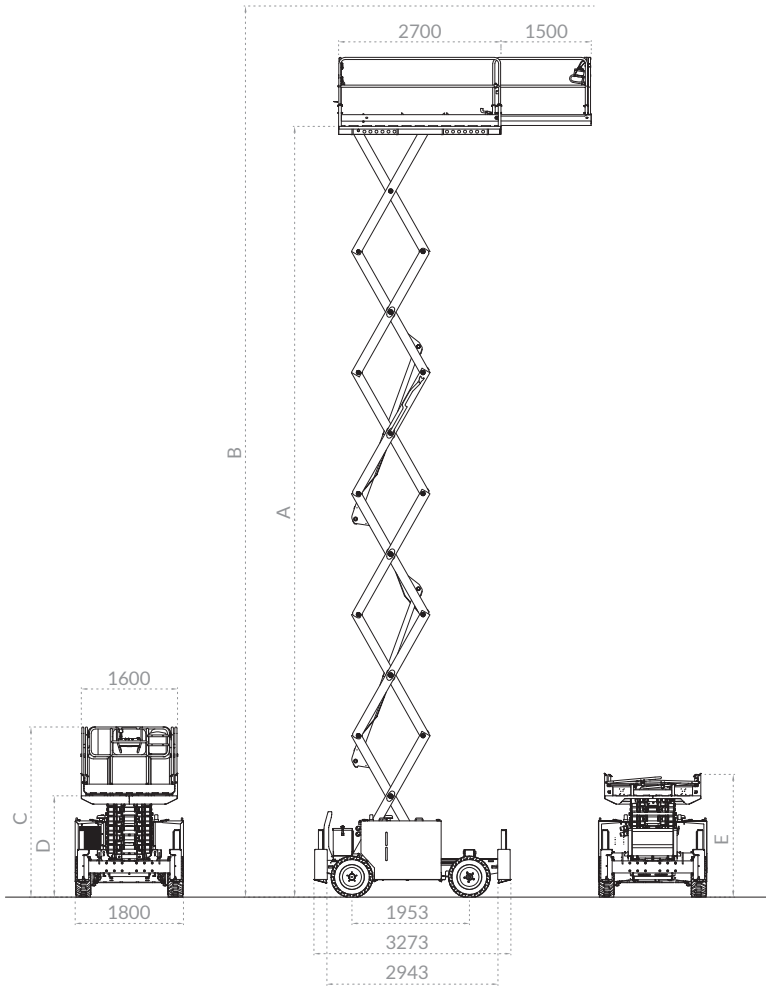
Plug unit for battery charger and power supply on basket with battery level indicator (E and DE versions)



Simple and intuitive control box that can be removed from the basket for loading / unloading the machine



Reduced steering angle thanks to 70° wheel inclination



		IM 11180 E	IM 11180 D	IM 11180 DE	IM 13180 E	IM 13180 D	IM 13180 DE
Number of scissors		5	5	5	6	6	6
A	mm	10800	10800	10800	12800	12800	12800
B	mm	12800	12800	12800	14800	14800	14800
C	mm	2687	2687	2687	2944	2944	2944
D	mm	1541	1541	1541	1698	1698	1698
E	mm	1899	1899	1899	2056	2056	2056
Length without / with stabilizers	mm	2943 / 3273	2943 / 3273	2943 / 3273	2943 / 3273	2943 / 3273	2943 / 3273
Min. height from chassis to ground	mm	300	300	300	300	300	300
Capacity (stabilized)	kg	500 (600)	500 (600)	500 (600)	400 (500)	400 (500)	400 (500)
Authorized persons	nr.	4*	4*	4*	4*	4*	4*
Weight without / with stabilizers	kg	4250 / 4450	4150 / 4250	4320 / 4650	4650 / 4750	4650 / 4650	4800 / 4850
Battery capacity with standard equipment	V / Ah	48 / 400	-	48 / 300	48 / 400	-	48 / 300
Max. battery capacity (optional)	V / Ah	48 / 525	-	48 / 400	48 / 525	-	48 / 400
Deck extension	mm	1500	1500	1500	1500	1500	1500
Max. side/longitudinal tilt angle	degrees	2,0 / 2,5	2,0 / 2,5	2,0 / 2,5	2,0 / 2,5	2,0 / 2,5	2,0 / 2,5

\* 2 people for outdoor use with non-stabilized platform



**IMER International S.p.A.**  
 Access Platforms Division  
 Via San Francesco d'Assisi 8 - 46020 Pegognaga (MN) Italy  
 Tel. +39 0376 554011 - Fax +39 0376 559855



TOGETHER WE BUILD

## Standard equipment

- 4WD hydrostatic transmission
- Negative parking brakes
- Mechanical wheel drive disengagement for emergency hauling
- Manual emergency lowering device
- Proportional controls
- Diagnostics and hour meter
- Cylinder holding valves
- Manual double asymmetric deck extension (2 m front + 0.9 m rear)
- Inclinometer with motion cut out and alarms
- Audible motion alarm
- Mechanical scissor protection
- Removable control box
- Oscillating rear axle
- Fold down railings
- Overload sensor
- Flashing beacons
- 230Volt cable with plug socket and security cut-out
- Automatic hydraulic levelling outriggers
- Access by lateral double ladder

## Standard equipment D

- Water-cooled Diesel engine 23 kW
- Start-up battery 24V 65 Ah
- Start-up battery alternator
- Rough terrain tyres extra grip 33x12 – 20"

## Standard equipment E

- Power pack 48V – 10 kW
- Traction battery 48V 630 Ah
- HF battery charger 48V – 55 A with automatic disengagement. Re-charging time 12-13 hours
- Battery control system with low voltage and safety cut-out
- Battery cut-out handle
- Non-marking rough terrain tyres extra grip 33x12 – 20"

## Optional

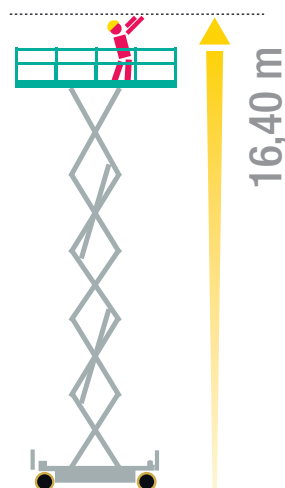
- Non marking tyres (IT 14220 D - IT 17220 D)
- Black tyres (IT 14220 E - IT 17220 E)



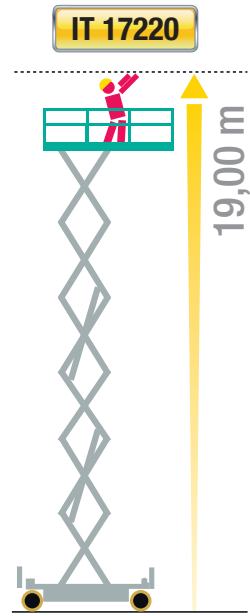
## Benefits

- ✓ **Very compact dimensions: 2.20x3.92 m**
- ✓ Large working surface with total length of 6.8 m **(with double asymmetric deck extension).**
- ✓ **IT 14220: drivable with full rated load (800 kg) at full working height**  
**IT 17220: drivable with full rated load (540 kg) at 16 m working height**
- ✓ Extremely versatile model, suitable for indoor/outdoor use and all terrain, thanks to the oscillating axle and the four-wheel drive permanently engaged.
- ✓ Automatic levelling outriggers for levelling the machine on rough terrain **(on even ground the stabilization is not compulsory).**
- ✓ Internal turning radius of only 0.8 m and short overall length of the machine allow a high manoeuvrability.
- ✓ Maximum load capacity and maximum number of people are totally authorized on the extension of the platform.
- ✓ Rigid chassis and scissor pack.

IT 14220







Automatic levelling outriggers for uneven or inclined terrains.



Manual double asymmetric deck extension (2 m front + 0.9 m rear).



Compact dimensions (2.20x3.92 m).



Large working surface with double deck extension (total: 14 sq.m.). Access by lateral double ladder.

		<b>IT 14220</b>	<b>IT 17220</b>
Number of scissors		5	6
A	mm	14380	17000
B	mm	16380	19000
C	mm	340	340
D	mm	3010	3200
E	mm	1820	2000
F	mm	2215	2400
Max drive height		full	14
Facultative stabilizers use up to max height			
Capacity (including 3 people)	kg	800	540
Diesel engine	kW		23
Electric motor	kW		10
Start-up battery	V/Ah		24 / 65
Traction battery	V/Ah		48 / 630
Start-up battery weight	kg		38
Traction battery weight	kg		960
Battery charger	V/A		48 / 55
Oil tank capacity	l		80
Max. speed	km/h	6 (Diesel) / 3,3 (Battery)	
Safety speed	km/h	Max. 0.6	Max. 0.5
Gradeability	%	45% (Diesel) / 30% (Battery)	
Max. Lateral inclination	degrees	2°	1.5°
Max. Longitudinal inclination	degrees	2°	
Internal turning radius	m	0.8	
External turning radius	m	4.2	
Tyre type		33x12-20"	
Tyre dimensions	mm	815 x 295	
Weight	kg	7950(D) / 8260(E)	8300(D) / 8600(E)

